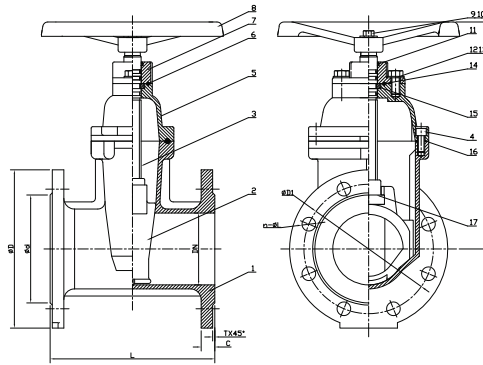


Flanged Resilient NRS Gate Valve (DGV1602F), PN16



MATERIAL SPECIFICATION

Part No.	Part	Standard Specification	Options
1	Valve Body	EN-GJS-450-10	
2	Resilient Wedge Disc	EN-GJS-450-10+EPDM	
3	Stem	Stainless Steel	SS304, SS316, SS420, SS431
4	Bolt	Carbon Steel Zinc Plated	SS304, SS316,
5	Bonnet	EN-GJS-450-10	
6	O-Ring	NBR	EPDM
7	Gland	EN-GJS-450-10	
8	Handwheel	EN-GJS-450-10	Pressed Steel
9	Bolt	Carbon Steel Zinc Plated	SS304, SS316,
10	Flat Washer	Carbon Steel Zinc Plated	SS304, SS316,
11	Ring Wiper	NBR	EPDM
12	Bolt	Carbon Steel Zinc Plated	SS304, SS316,
13	Flat Washer	Carbon Steel Zinc Plated	SS304, SS316,
14	O-Ring	NBR	EPDM
15	Thrust Washer	Brass HPb59-1(Type A) Not Available (Type B)	
16	Bonnet Gasket	EPDM	NBR
17	Wedge Nut	Brass HPb59-1	Bronze ZQSn5-5-5

- Connection Ends: Flange to BS EN 1092-2:1997

Working Pressure PN16

- Temperature Range: 0°C- 80°C

- Coating: Fusion Bonded Epoxy Coating in accordance with ANSI/AWWA C550

Note: For special material request other than standard specification, please indicate clearly on the inquiry or order list.

DN		PN	Dimensions(mm)								
Inch	mm		L	H		D	D1	d	C	T	n-φL
				TypeA	TypeB						
2"	50	10/16	178	218	254	165	125	99	19	3	4-φ19
2.5"	65	10/16	190	232	275	185	145	118	19	3	4-φ19
3"	80	10/16	203	281	301	200	160	132	19	3	8-φ19
4"	100	10/16	229	316	355	220	180	156	19	3	8-φ19
5"	125	10/16	254	393	393	250	210	184	19	3	8-φ19
6"	150	10/16	267	420	448	285	240	211	19	3	8-φ23
8"	200	10	292	490	548	340	295	266	20	3	8-φ23
		16									12-φ23
10"	250	10	330	626	626	405	350	319	22	3	12-φ23
		16					355				12-φ28
12"	300	10	356	722	722	460	400	370	24.5	4	12-φ23
		16					410				12-φ28
14"	350	10	381	800	800	520	460	429	26.5	4	16-φ23
		16					470				16-φ28
16"	400	10	406	870	870	580	515	480	28	4	16-φ28
		16					525				16-φ31
18"	450	10	432	1108	1108	640	565	530	30	4	20-φ28
		16					585	548			20-φ31
20"	500	10	457	1130	1130	715	620	582	31.5	4	20-φ28
		16					650	609			20-φ34
24"	600	10	508	1311	1311	840	725	682	36	5	20-φ31
		16					770	720			20-φ37
28"	700	10	610	1311	1311	895	840	794	32.5	5	24-φ31
32"	800	10	660	1750	1750	1015	950	901	35	5	24-φ34